

CSDE Newsletter

Issue 11 | 10/09/2020

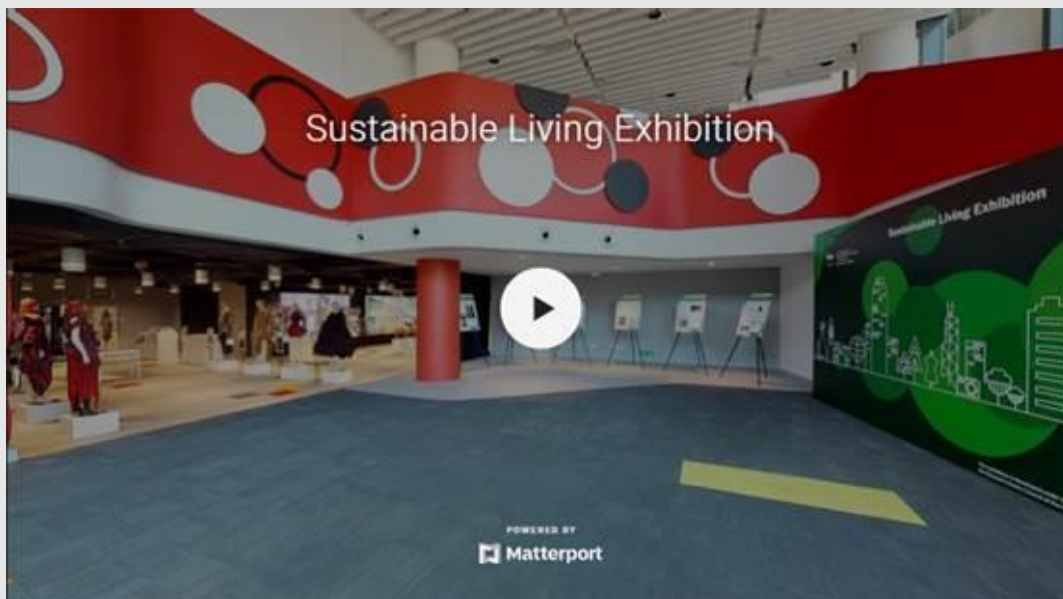
ABOUT CSDE

The “Centre for Sustainable Design and Environment (CSDE)” was established in 2017 under the Faculty of Design and Environment (FDE), which is financially supported by the Research Grants Council (UGC/IDS25/16). The mission is to promote research and development, knowledge exchange, and education in the areas of sustainable design and environment.

WHAT'S NEW

VR Exhibition for Sustainable Living

The Centre for Sustainable Design and Environment organised an exhibition at exhibition hall (S004), THEi (CW) to showcase some of the design and research output about sustainable living from the Faculty of Design and Environment.



A series of textiles, garments, footwear, furniture, jewellery and decorations designed by students and teaching staff with the concept of sustainable living was shown in the exhibition. Two teams from Innov8 Enterprise Start-up Programme, Doshu Woodcraft and Upcyco, were invited to showcase their products which were made of wasted wood and leather respectively. The CSDE worked with both teams by providing technical suggestions in laser and digital cutting at the initial prototype making process.

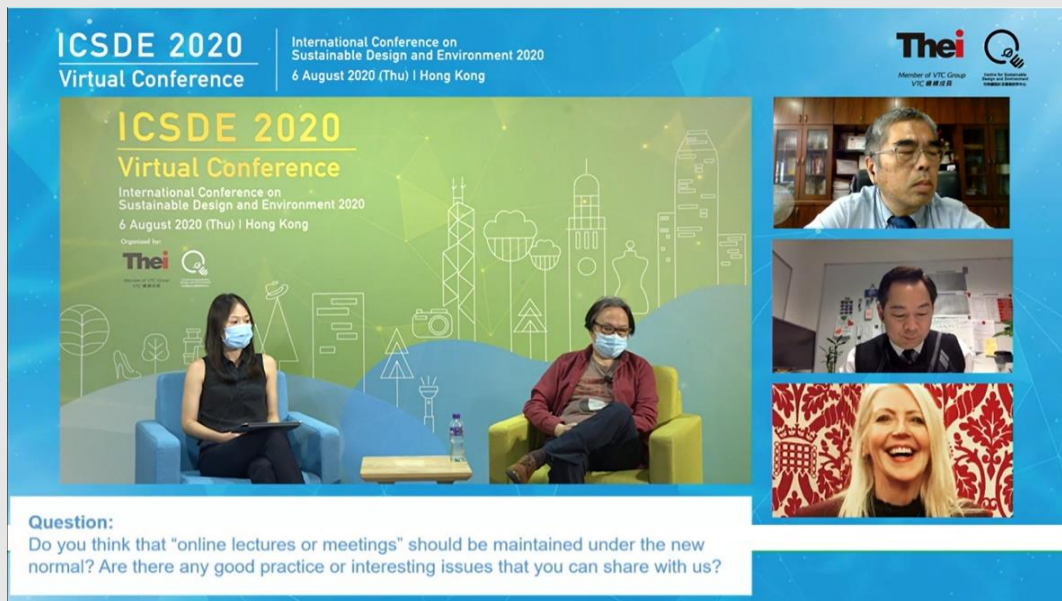
Access link of VR Exhibition:

<https://my.matterport.com/show/?m=N8Labh9iA3F>

IDS ACTIVITIES

Virtual ICSDE 2020 - International Conference on Sustainable Design and Environment 2020

The International Conference on Sustainable Design and Environment 2020 (ICSDE 2020) was held virtually on 6 August 2020. The conference has attracted academics, industry partners, researchers, and students who share a common interest in interdisciplinary research on sustainability. Over 250 delegates all over the world joined the conference to exchange the knowledge of sustainability research, as well as share the global trend on research directions and new tools for analysis.



After the event was opened by Professor Christina Hong, President of THEi, and Professor Daniel Ho Chi-Wing, Chair of the Organizing Committee, the conference has featured renowned scholars to deliver keynotes on different areas of sustainability. The first speaker, Professor Alan Lau Kin-Tak, Pro-Vice-Chancellor (Research Performance and Development), Swinburne University of Technology opened the keynote session with his speech titled '*Intelligent Manufacturing Technologies – Past, Present and the Future*'. His keynote elucidates how advanced data analytics has brought revolutionary changes in every stage of the production cycle, and the benefits and challenges to bring this new concept into the business model.

Dr Julie King, Deputy Dean, Faculty of Creative Industries, University of South Wales shared her reflections on the sustainability initiatives taken by the UK fashion retailers via her keynote themed '*Global Sustainability in the Fashion and Textiles Supply Chain from a UK perspective*'.

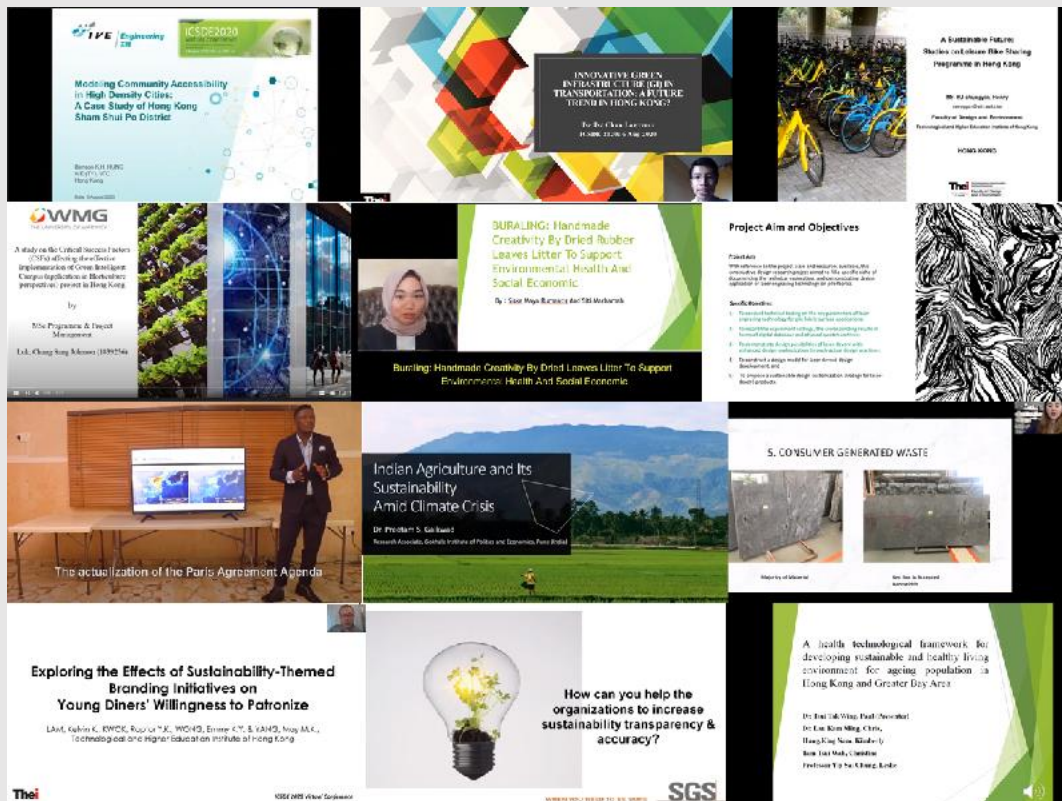
Prof Ming-Jer Tsai, Associate Dean of the College of Bioresources & Agriculture and Director of the Experimental Forest, National Taiwan University has provided a detailed account on '*The Role of Wood Utilization in Sustainable Forestry – The Example of the Experimental Forest, National Taiwan University*', which demonstrates how to achieve forest sustainability and carbon sequestration via the development of the forestry circular economy.

Professor Stephen Lau, Honorary Professor, the University of Hong Kong, presented the last keynote '*A Revelation of Three Pillars*' as a reminder of the challenges, attempts and efforts in the pursuit of the seemingly unachievable goal of sustainability in recent decades.

After the addresses, the keynote speakers' panel discussion on the topic of '*Rethinking Sustainable Living amidst the COVID19 Pandemic*' has brought tremendous insight into the challenges and opportunities

brought by the coronavirus. Their exchange of knowledge has inspired the audience on how to reconstruct the post-pandemic order by making sustainability a priority.

CSDE is very pleased to have over 20 researchers from all over the world presented their works on sustainability in the afternoon parallel presentation session, which shed lights on the latest innovations and ideas in promoting and enhancing sustainable living.



ICSDE 2020 Book of Programme & Abstracts: <https://online.flippingbook.com/view/186529/>

Sustainable Lighting Design Exhibition 2020



Centre for Sustainable Design and Environment held an exhibition titled 'Sustainable Lighting Design Exhibition 2020' at THEi 3/F on 21 – 30 July 2020.

In response to the ever-increasing problem of waste caused by modern-day consumerism, THEi Product Design students were asked to create designs using concepts from Circular Economy and Cradle to Cradle with the use of machinery typically found in "Maker Spaces" to come up with sustainable lighting designs that can be batch produced and are sustainable. The designs in the exhibition show how students met the challenge by creating designs using materials that are not harmful to the environment.

This project was supported by the Hong Kong Printing and Publishing Media Industry Workers Union which provided material and technological support.

Laser Cutting Training Workshops

Technical training of principles and application of Laser Cutting was arranged for the THEi students from Fashion Design Programme on 9 June 2020. 2 training sessions were conducted.

The training included the following components: 1) Introduction of Principles of Laser Cutting, 2) Applications of laser cutting in fashion design, and 3) demonstration of cutting and engraving functions on cotton textile.

We welcome all THEi staff and students to utilize our resources in their research projects.



Teaching staff presented their research in Virtual conferences

A number of THEi teaching staff had presented their research in virtual conferences:

AMERABRA International Virtual Conference on Environment-Behaviour Studies, Malaysia, 24-25 June 2020

LAW, Caroline M.Y. LI, S.M. LAM, C.Y.	<i>Plant Diversity and Plant Performance of Indoor and Outdoor Vertical Greening Systems in Hong Kong</i>
---	---

11th International Conference on Applied Human Factors and Ergonomics and the Affiliated Conference, 16-20 July 2020, USA

CHEUNG, Jenny L. NG, Roger K.P. LUK, Jim T.C. LEE, Rainbow C.S.	<i>Sustainable 3D Printing Mid-Sole for Functional Footwear</i>
--	---

International Conference on Sustainable Design and Environment 2020, Hong Kong, 6 August 2020

Staff	Topic
CHAN, Arthur A.P. CHU, Alice W.C. WU, Jack H.C. CHEONG, K.Y. CHAN, C.T.	<i>Improving the Apparel Size Fitting Prediction under Psychographic Characteristic and 3D Body Measurements Using Artificial Neural Network.</i>
CHENG, Hiu	<i>Sustainable Perspective of Hong Kong Fashion Designers – An Investigation of Awareness on Sustainable Elements in Design Process</i>
LAM, Kelvin K., KWOK, Raptor Y.K. WONG, Emmy K.Y. YANG, May M.K.	<i>Exploring the Effects of Sustainability-Themed Branding Initiatives on Young Diners' Willingness to Patronize</i>
LAW, Caroline. M.Y. HUI, L.C. MA, Jess. T.L.	<i>Tree Species Composition, Planting Density and Pruning Practices on Commercial Podium Gardens in Hong Kong</i>
LEE, Eunice C.S. CHAN, Arthur A.P. NG, Haze K.H. CHENG, Hiu CHU, Alice W.C.	<i>Sustainable Knitted Footwear Design for Tai Chi: an Investigation of Knitting Tensions and Foot Shapes under Sensation of Comfort</i>

LUK, C.S. HO, L.S.	<i>A Study on the Critical Success Factors (CSFs) Affecting the Effective Implementation of Green Intelligent Campus (Application in Horticulture Perspectives) Project in Hong Kong</i>
LUK, C.S. LAW, Caroline M.Y.	<i>Water Conservation for Irrigation of Urban Ornamental Plants in Hong Kong</i>
NG, Haze K.H. LEE, Eunice C.S. YEUNG, Kenneth L.Y. CHAN, Arthur A.P. CHU, Alice W.C.	<i>Design Exploration of Sustainable Devoré with Adoption of Laser Engraving Technology</i>
TSE, Lawrence T.C.	<i>Innovative Green Infrastructure (GI) in Transportation: A Future Trend in Hong Kong?</i>
TSUI, Paul T.W. LAU, Chris K.M. TAM, Christine T.W. YIP, Leslie S.C.	<i>A Health Technological Framework for Developing Sustainable and Healthy Living Environment for Ageing Population in Hong Kong and Greater Bay Area</i>
YU, Henry C.Y	<i>A Sustainable Future: Studies on Leisure Bike Sharing Programme in Hong Kong</i>

Fashion Design graduate Jason Lee invited in a sustainable project collaborated by Nike and HYPEBEAST



Designer Jason Lee, a graduate of Fashion Design programme in 2017, was invited by Nike and HYPEBEAST in an upcycling project by redesigning the used clothes to show Nike's pursuit of sustainable fashion.

The concept of sustainability has already infused in the first collection of Jason's brand "YMDH Studio" by using organic cotton in his design. In this project, Jason uses the concept of deconstruction and restructure on Nike's top and his T-shirt to match the design of Air VaporMax 2020 Flyknit, which is made of at least 50% recycled materials.

Report for Nike's sustainable fashion – Designer Jason Lee Upcycling Tops to Match Air VaporMax2020 can be found here: <https://hypebeast.com/zh/2020/8/nike-vapormax-2020-flyknit-jason-lee-ymdhstudio>

Upcoming Publication

With the support from the University Grants Committee (HK), Dr Tris Kee's research paper 'Adaptive reuse of heritage architecture and its external effects on the sustainable built environment—Hedonic pricing model and case studies in Hong Kong', co-authored with Professor K.W. Chau from the University of Hong Kong has been accepted by *Sustainable Development* (impact factor: 3.930), which is a wide interdisciplinary publication seeks to further debate and discuss sustainable development with a local, national or global focus.

By two adaptive reuse heritage case studies in Hong Kong with respective hedonic pricing analysis on their adjacent property prices, this paper presents the results of how residential property prices have been increased as a result of heritage adaptive reuse. The research has added new knowledge to the heritage conservation from the perspective of sustainable development.

ENQUIRIES

Please contact for more information:

Dr. Kenneth Yeung
Ms. Karen Lam

Research Officer
Administrative Officer

E. Kenneth_yeung@vtc.edu.hk
E. id.karen@vtc.edu.hk

T. 3890 8377
T. 3890 8375